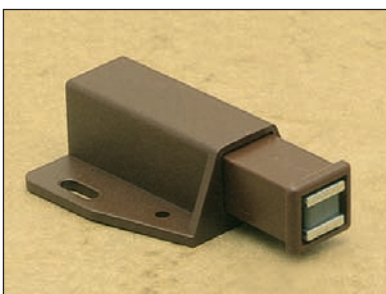
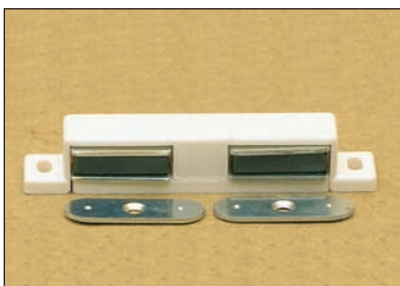
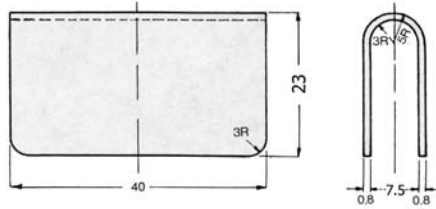


SECTION 4



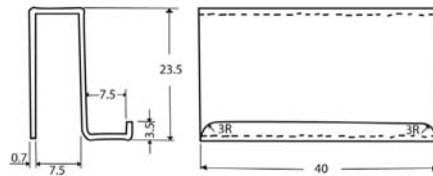
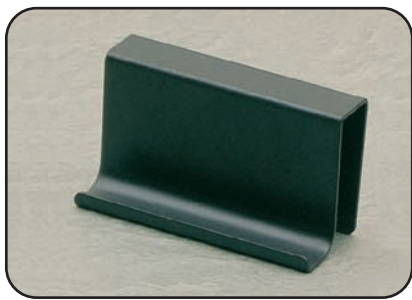
TOUCH LATCHES & CATCHES

GLASS DOOR CATCH PLATES & PULLS



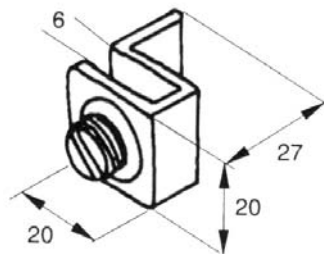
7011.001.060 BLACK
7012.001.010 CHROME
7013.001.028 BRASS
7014.001.122 BRUSHED NICKEL

- To be used with a magnetic touch latch
- Adhesive Cushion Included
- Material: Steel
- Packaging: 1,000 pieces



7015.001.060 BLACK
7016.001.010 CHROME
7016.001.039 SATIN NICKEL
7017.001.028 BRASS

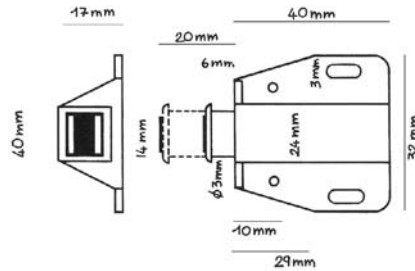
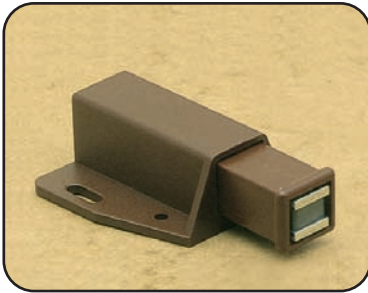
- Adhesive Cushion Included
- Material: Steel
- Packaging: 500 pieces



7020.002.060 BLACK
7021.002.010 CHROME
7022.002.028 BRASS

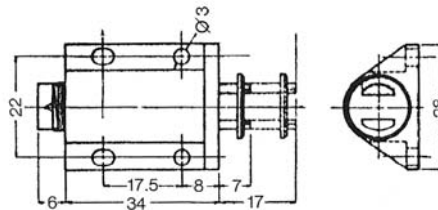
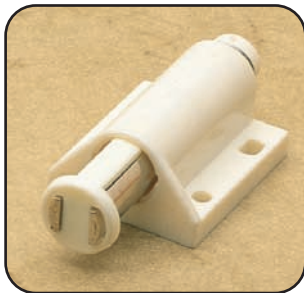
- Adhesive Cushion Included
- Glass Thickness: 3/16" - 1/4"
- Screw: Nylon
- Material: Zinc Die Cast
- Packaging: 100 pieces

MAGNETIC TOUCH LATCHES



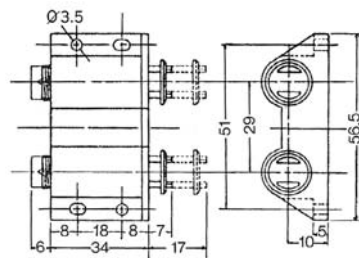
7089.001.061 WHITE
7090.001.067 BROWN
7091.001.060 BLACK

- Ideal for Large Doors
- Superb spring tension & magnetic force at 10 kgs
- Material: Plastic
- Packaging: 100 pieces



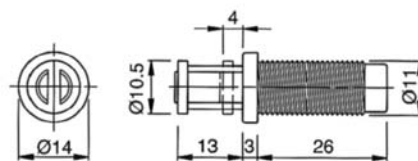
7009.001.060 BLACK
7009.001.061 WHITE
7009.001.067 BROWN

- Suitable for glass or wood doors
 - Material: Plastic
 - Packaging: 500 pieces
- *Please reference item 7009.002 plus the finish code to order the touch latch with strike plate.



7007.001.060 BLACK
7007.001.061 WHITE
7007.001.067 BROWN

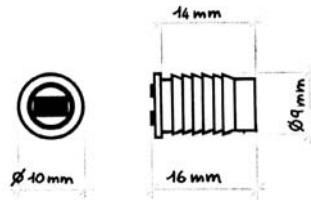
- Double touch latch for two doors
 - Material: Plastic
 - Packaging: 500 pieces
- *Please reference item 7007.002 plus the finish code to order the touch latch with strike plate.



5088.001.060 BLACK

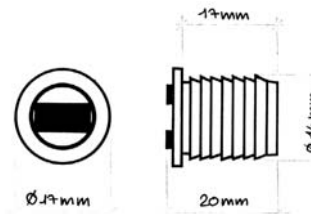
- Mortise type
- Material: Plastic
- Packaging: 500 pieces

MAGNETIC CATCHES



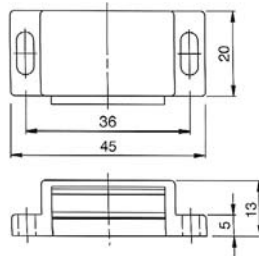
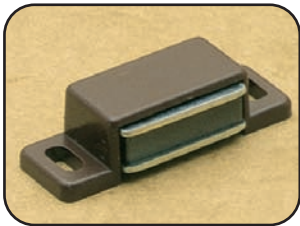
0636.009.060 BLACK

- Mortise Type
- Magnetic force: 8 kgs
- Material: Plastic
- Packaging: 500 pieces



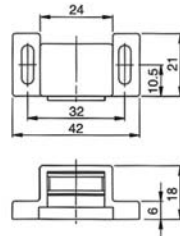
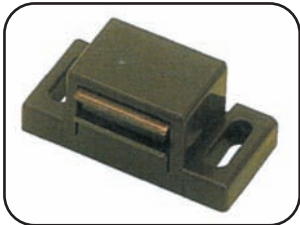
0635.014.060 BLACK 0635.014.061 WHITE

- Mortise Type
- Magnetic force: 10 kgs
- Material: Plastic
- Packaging: 500 pieces



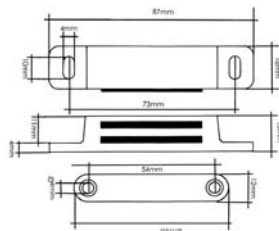
1010.001.061 WHITE 1011.001.067 BROWN 1012.001.060 BLACK

- Magnetic Force: 3 kgs
- Material: Plastic
- Packaging: 1,000 pieces



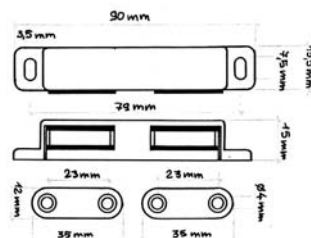
5065.001.067 BROWN

- High Boy
- Magnetic force: 4 kgs
- Material: Plastic
- Packaging: 500 pieces



0652.001.067 BROWN

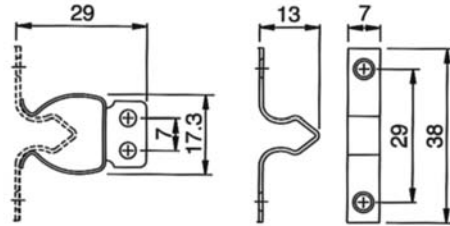
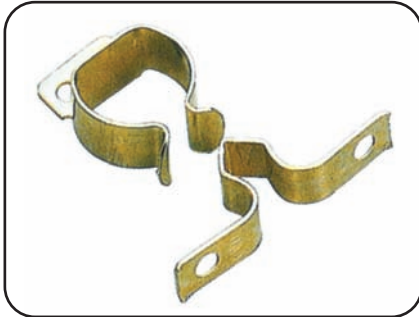
- Magnetic Force: 12 kgs
- Material: Plastic
- Packaging: 500 pieces



1015.001.061 WHITE 1016.001.067 BROWN

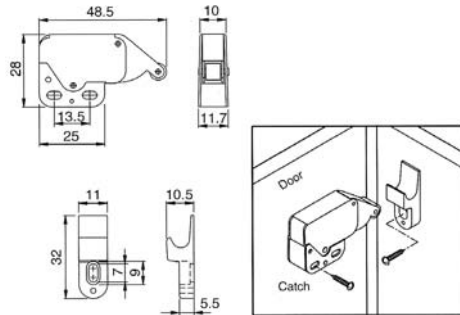
- Magnetic Force: 6 kgs
- Strikes Included
- Material: Plastic
- Packaging: 100 pieces

SPRING / FRICTION CATCHES



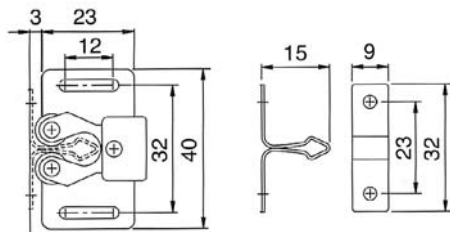
5506.001.049 ANTIQUE BRASS

- Plinth Spring Catch
- Strike Included
- Material: Steel
- Packaging: 500 sets



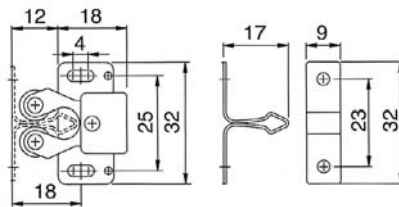
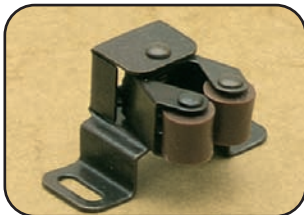
1001.001.157 CHROME/WHITE 1002.001.138 BRASS/BROWN

- Mini Latch
- Strike Included
- Material: Steel/Plastic
- Packaging: 100 sets



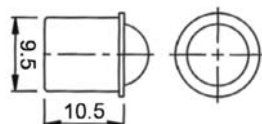
1005.001.049

- Low Rise Double Roller Catch
- Strike Included
- Material: Steel/Plastic
- Packaging: 1,500 sets



1006.002.049 ANTIQUE BRASS

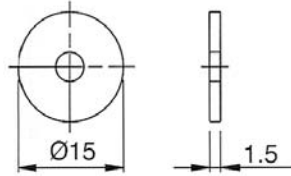
- High Rise Double Roller Catch
- Strike Included
- Material: Steel/Plastic
- Packaging: 1,000 sets



2247.008.156 BRASS/CHROME

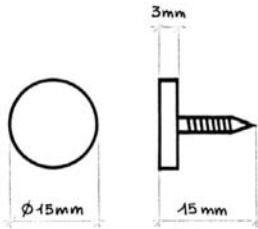
- Bullet Catch
- Material: Solid Brass
- Packaging: 100 pieces

STRIKE PLATES



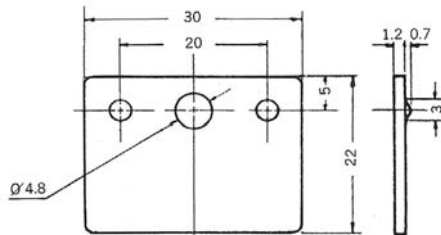
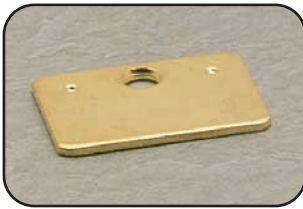
7080.015.098 ZINC PLATED

- For use with Magnetic Catch or Touch Latch
- Material: Steel
- Packaging: 500 pieces



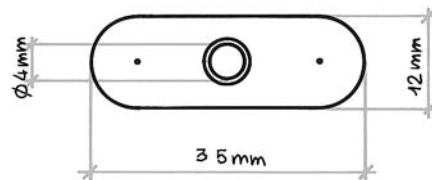
7081.015.098 ZINC PLATED

- For use with Magnetic Catch or Touch Latch
- Material: Steel
- Packaging: 500 pieces



7083.030.000 NICKEL 7083.030.049 ANTIQUE BRASS

- For use with Magnetic Catch or Touch Latch
- Material: Steel
- Packaging: 3,000 pieces



7082.035.098 ZINC PLATED

- For use with Magnetic Catch or Touch Latch
- Material: Steel
- Packaging: 2,500 pieces

*Please reference item 7082.002.098 to order the strike plate with screw.



OTHER AVAILABLE STYLES

*Please contact us for detailed specifications on other styles that are available by special order. Minimum quantities apply.